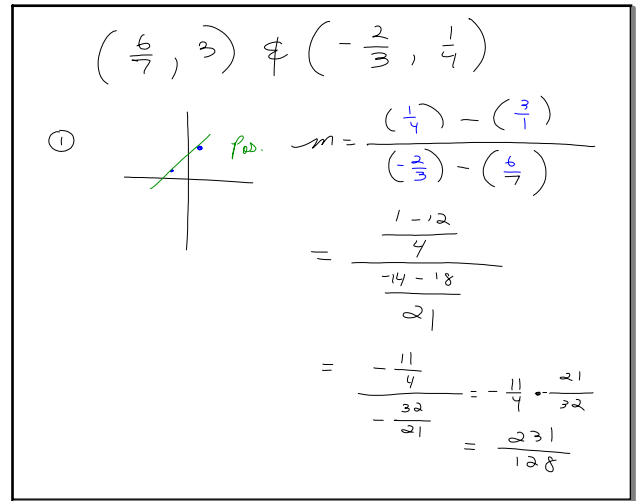


Feb 6-9:50 AM



Feb 6-10:23 AM

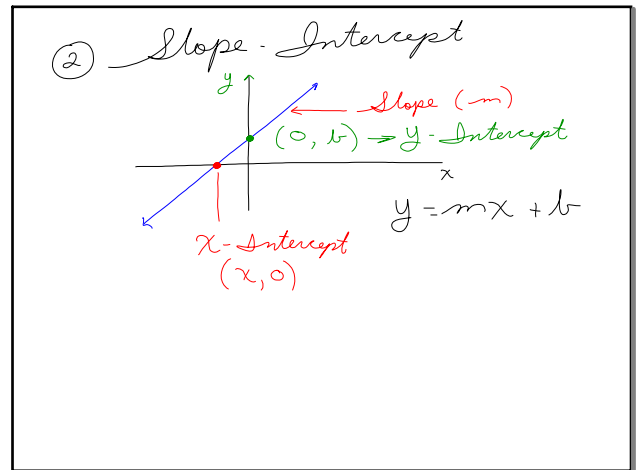
Forms of Linear Equations

① Standard Form  
 $Ax + By = C$   
 \* where  $A, B, C \in \mathbb{Z}$   
 i.e. Not fractions

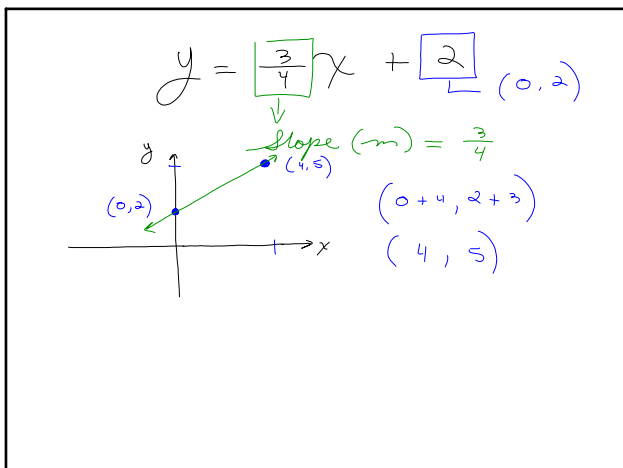
② Slope-Intercept Form  
 $y = m x + b$   
 Slope:  $m$ , y-Intercept:  $(0, b)$

③ Point-Slope Form  
 $y - y_1 = m(x - x_1)$   
 \* where  $(x_1, y_1)$  is a point that is given

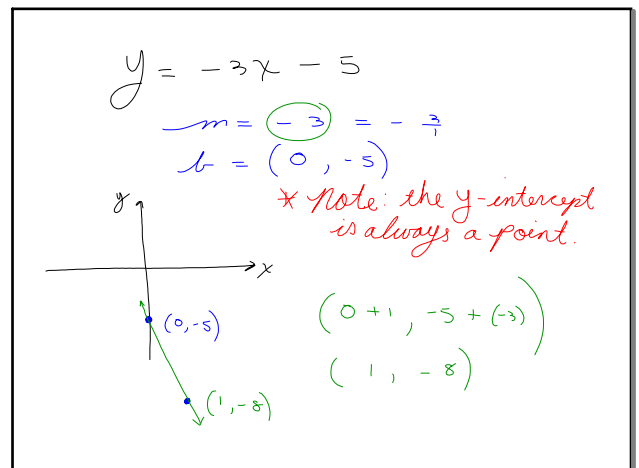
Feb 6-10:27 AM



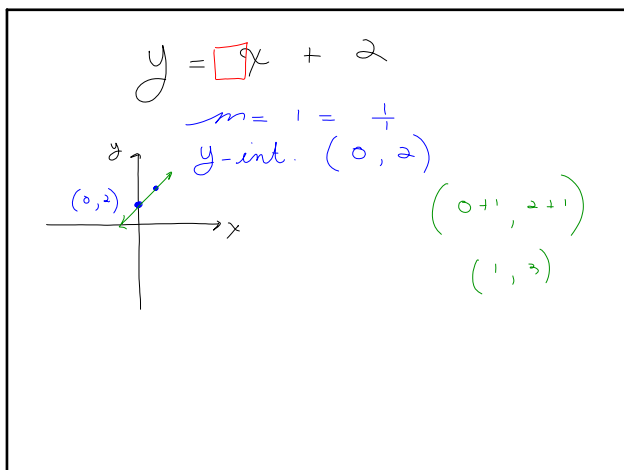
Feb 6-10:35 AM



Feb 6-10:39 AM



Feb 6-10:43 AM



Feb 6-10:47 AM

$$(4, 7) \neq (3, 9)$$
$$\Delta y = 9 - 7 = 2 \text{ units}$$
$$\Delta x = 3 - 4 = -1$$

Feb 6-10:51 AM

Start 9.1 CO 2  
+ assignment

Feb 6-10:49 AM